

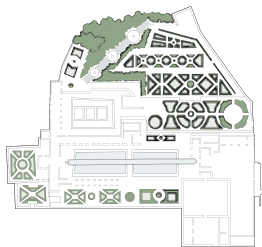


PROJECT TITLE  
**DIVERSITY GARDEN**

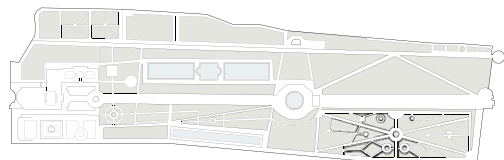
CLIENT  
Cullen Family Foundation  
University of Houston Public Arts Program

LOCATION  
University of Houston

SQUARE FOOTAGE  
60,000 sq.ft.



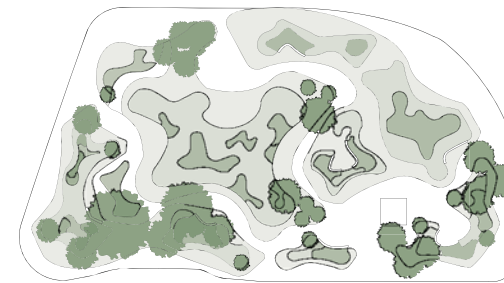
ALHAMBRA  
GRANADA, ANDALUSIA, SPAIN  
AD 889



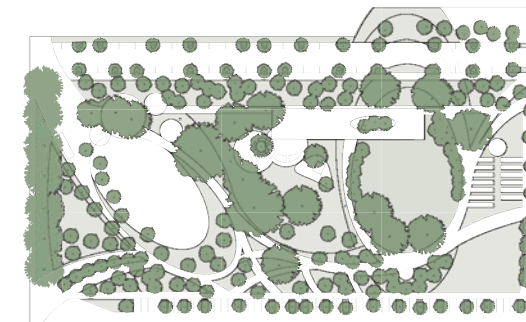
CHÂTEAU D'USSE  
ANDRÉ LE NÔTRE  
RIGNY-USSE, FRANCE  
1664



SISSINGHURST CASTLE GARDEN  
VITA SACKVILLE-WEST AND HAROLD NICOLSON  
WEALD OF KENT, ENGLAND  
c. 1930



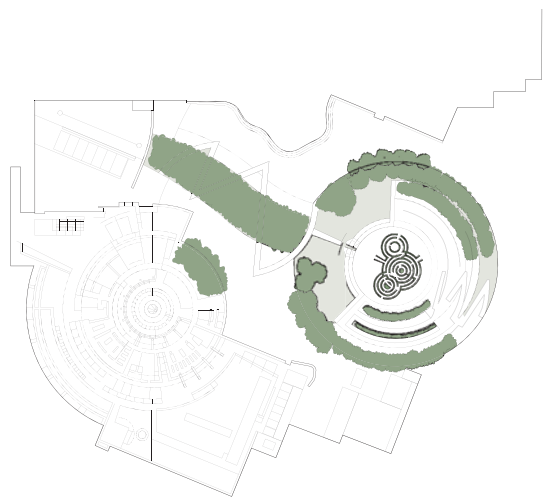
PRACA SENADOR SALGADO FILHO  
SANTOS DUMONT AIRPORT  
BURLE MARX  
RIO DE JANEIRO, BRAZIL  
c. 1930



LEVY PARK  
OBJ LANDSCAPE ARCHITECTS  
HOUSTON, TEXAS  
2016



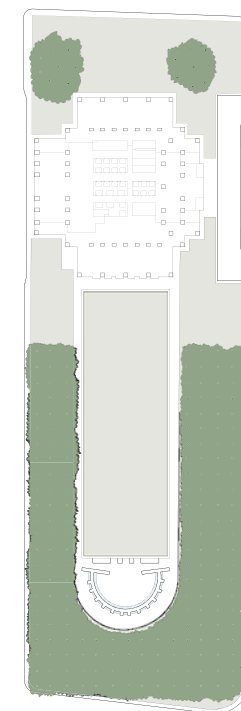
KATSURA IMPERIAL VILLA  
PRINCE HACHIJO TOSHIHITO  
KYOTO, JAPAN  
c. 1600



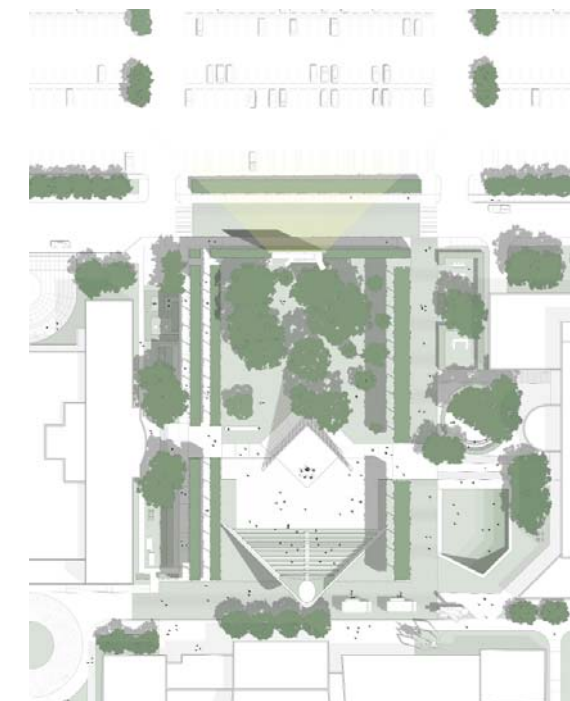
CENTRAL GARDEN  
GETTY CENTER  
ROBERT IRWIN  
LOS ANGELES, CALIFORNIA  
1997



LILLIE AND HUGH ROY CULLEN SCULPTURE GARDEN  
MUSEUM OF FINE ARTS HOUSTON  
ISAMU NOGUCHI  
HOUSTON, TEXAS  
1986



GERALD D. HINES WATERWALL PARK  
WILLIAMS TOWER  
PHILIP JOHNSON  
HOUSTON, TEXAS  
1985

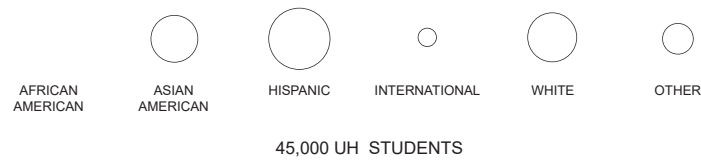
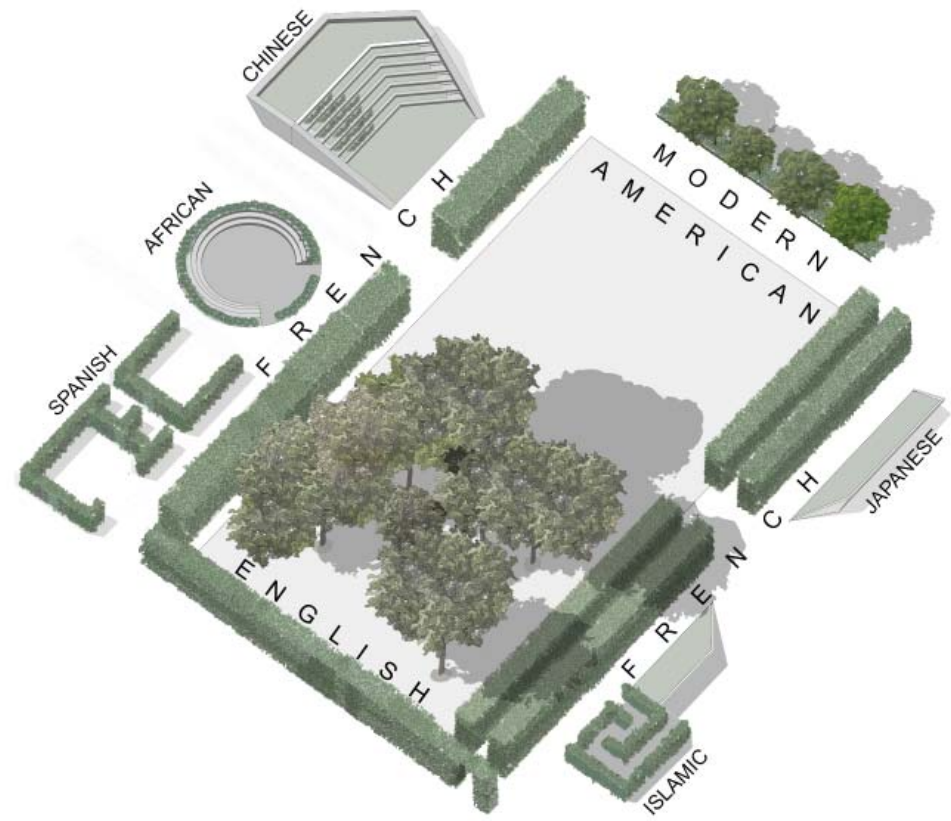


WILHELMINA'S GROVE  
DIVERSITY GARDEN  
HOUSTON, TEXAS  
2019

## DIVERSITY GARDEN

### HISTORICAL PRECEDENT: COMPARATIVE GARDENS

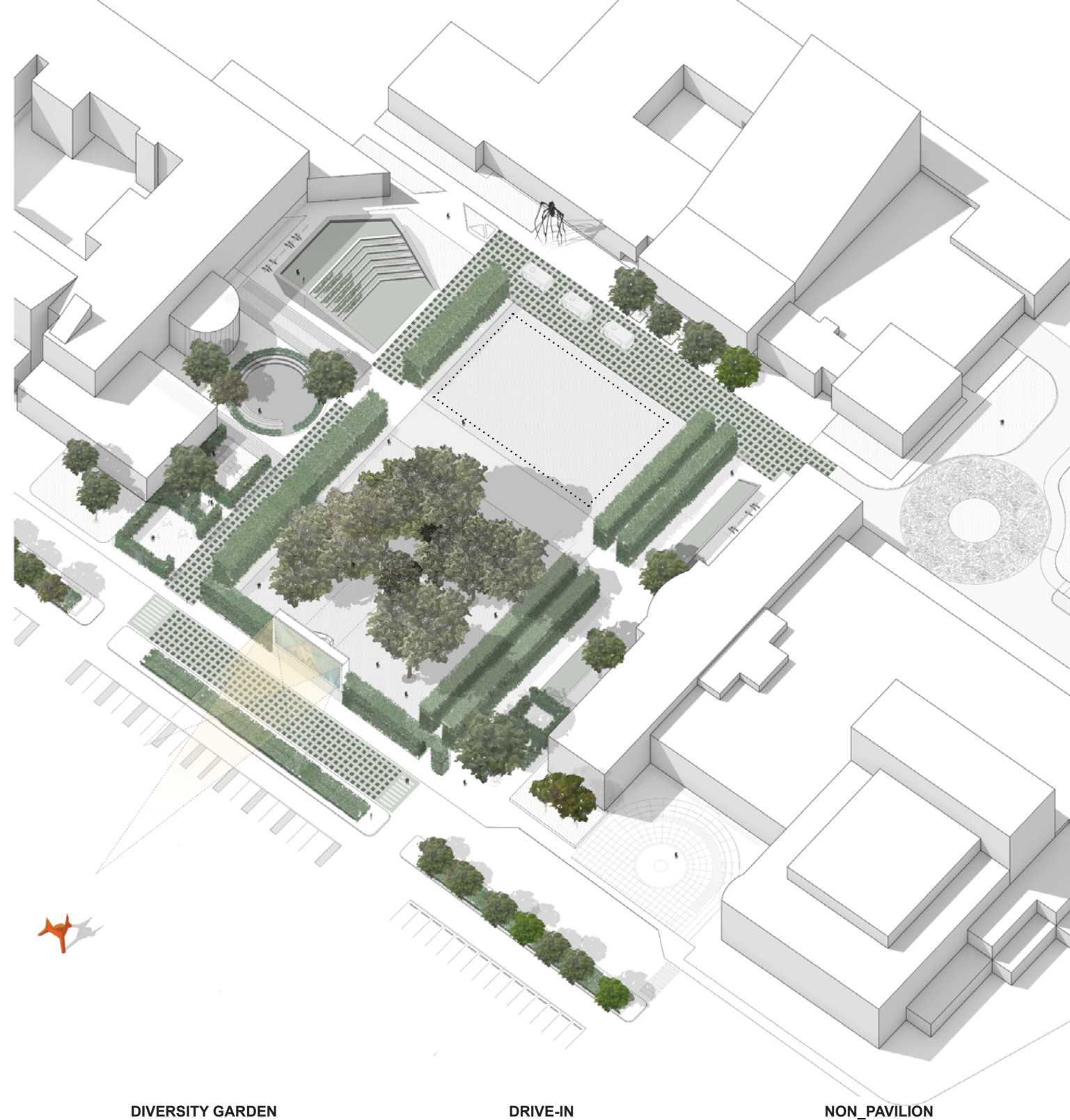
Historical landscapes were diagrammed with relative scales to provide a collection of global typologies. Their aggregation, applied to a University quadrangle, generated an integrated hub for the campus arts district. The collective application of principles offers a modern American Garden: a Diversity Garden.



## DIVERSITY GARDEN

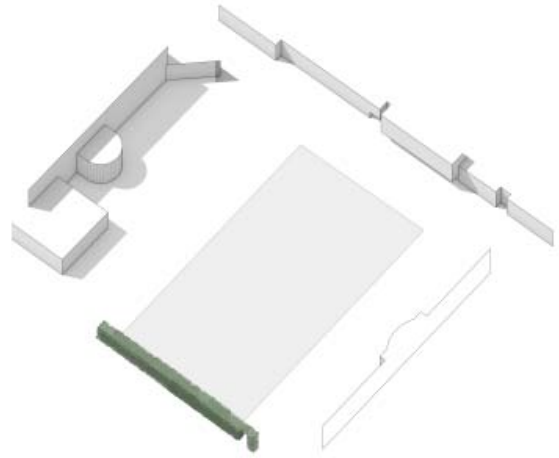
### INCLUSIVE TYPOLOGIES

Integrated layers of contextual and historical landscapes create outdoor rooms for occupation and engagement. Each space rings the central historic grove and open field to frame and individuate the University Arts District quadrangle.

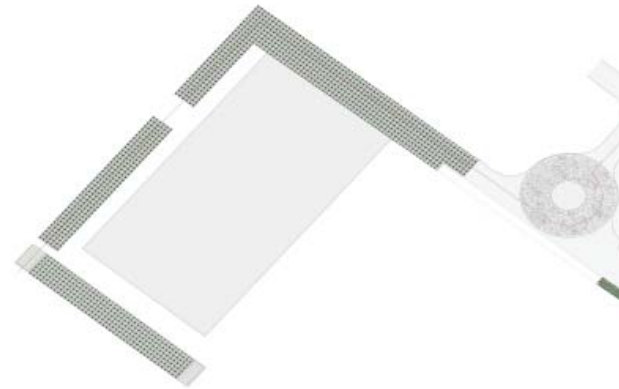




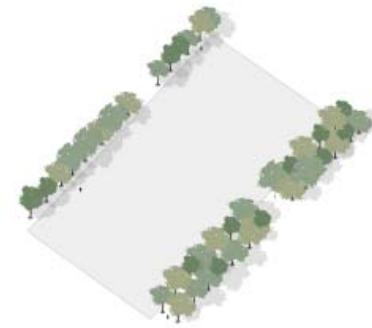
OLD GROVE PRESERVED



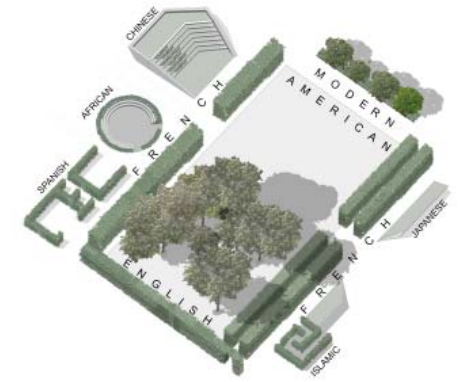
4TH WALL CREATED TO SHIELD FROM PARKING



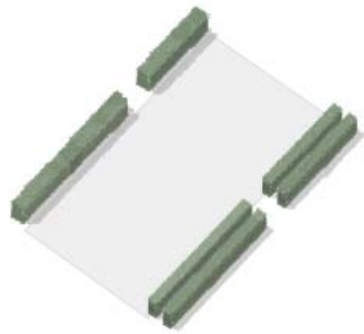
ROUNDBABOUT ADDED TO REMOVE AUTOMOBILES



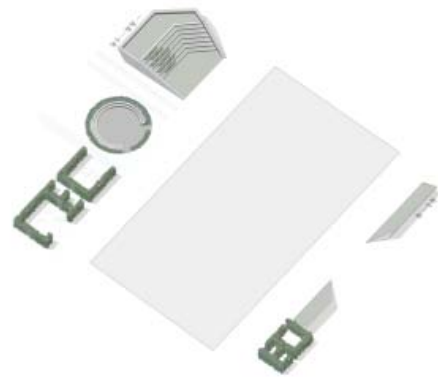
UNTRIMMED ALLÉE TO BRACKET SPACE



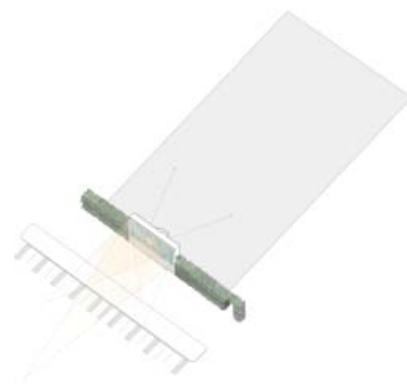
DIVERSITY GARDEN: CULTURALLY REFERENTIAL FORMS



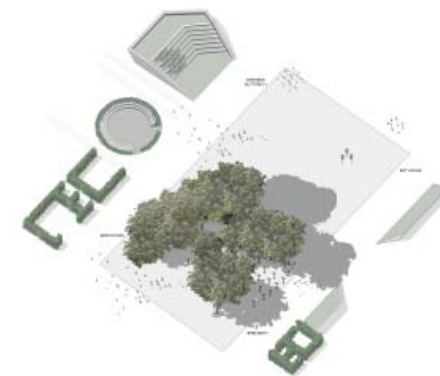
ALLÉE TO FRAME CENTRAL ROOM



HEDGE ROOMS AND GRASS BERMS AS SIDE CHAPELS



SCREEN AS DRIVE-IN



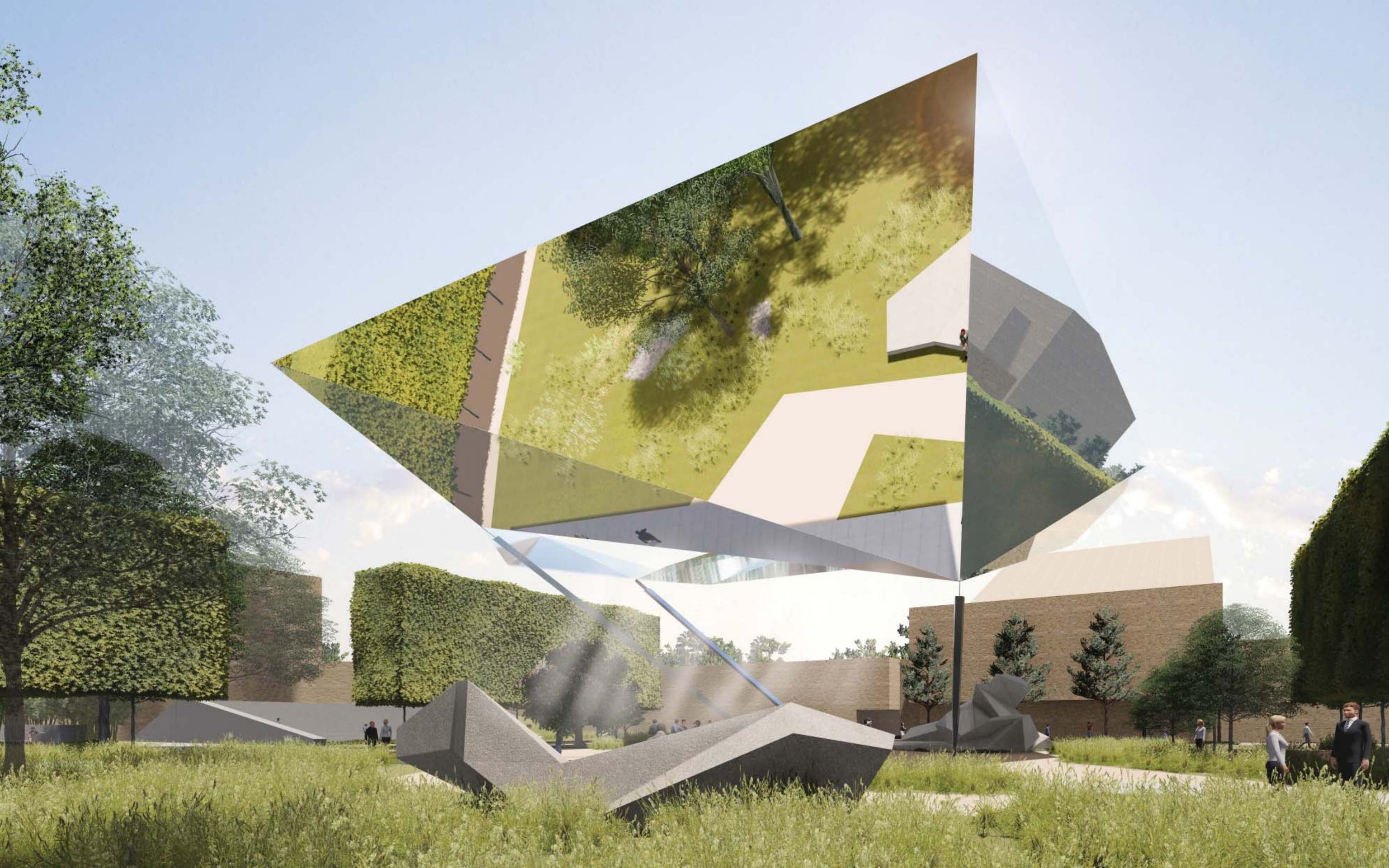
LIVING GARDEN WITH INDIGENOUS PLANTS TO SUSTAIN AND FOSTER WILDLIFE

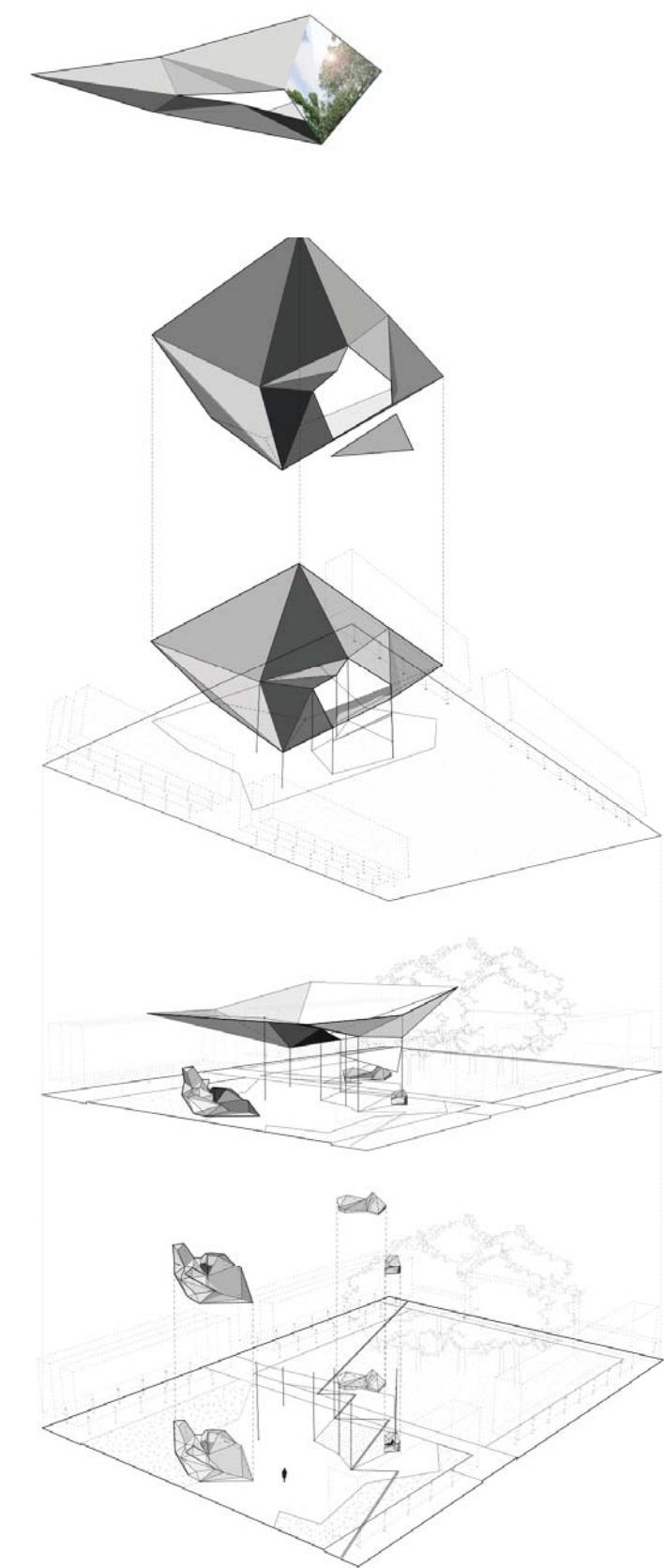
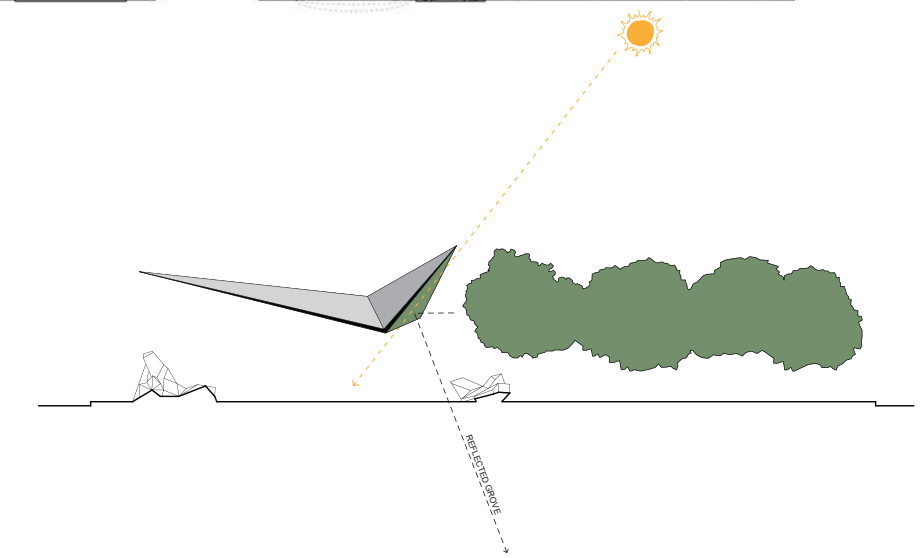
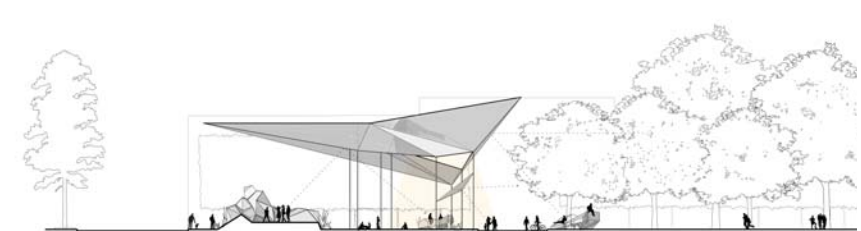
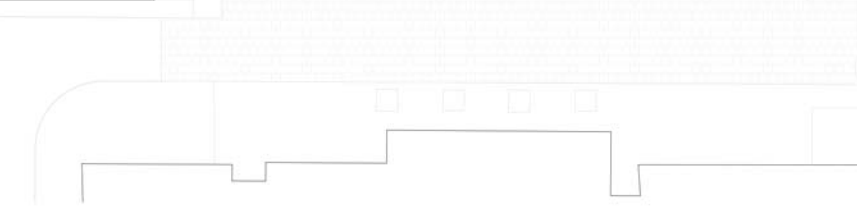


CIRCULATION + ART

## DIVERSITY GARDEN

### ELEMENTS OF DESIGN

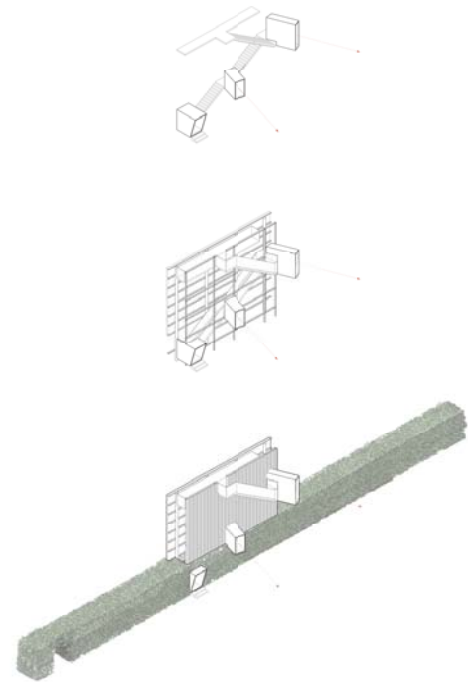
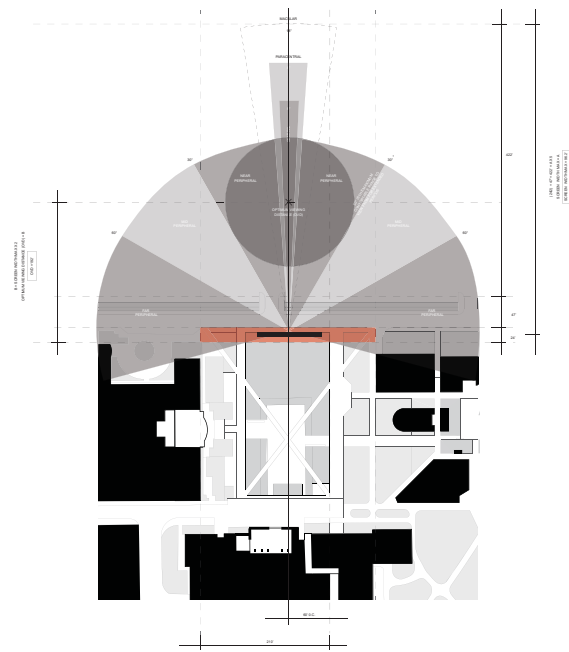




## PAVILION

### EXPERIENTIAL OBJECT

A polished stainless steel canopy creates a reflected grove by mirroring the existing old growth trees and producing an ephemeral artificial canopy. Faceted ground forms create plinths, benches, stages, and seating.

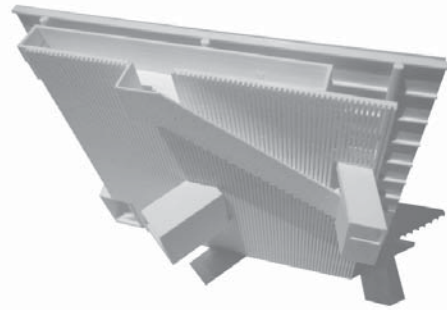
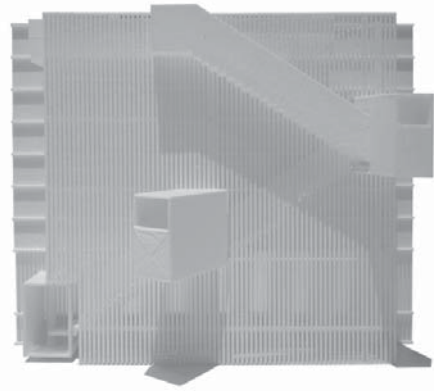


## DRIVE-IN

### DIGITAL FIGURE

The addition of a north facing screen engages the Grove with the adjacent parking lot as an extended Drive-In. Added to house a growing collection of new, media based, public art pieces, the image screen becomes an icon for the University visible from the highway. As an event space it is used as a scrolling display for the art collection or curated periodically as a Drive-In. The screen is thickened to host an internal stair with outcroppings that creates a viewing platform for engaging the historic Grove while providing an elevated view of downtown Houston.

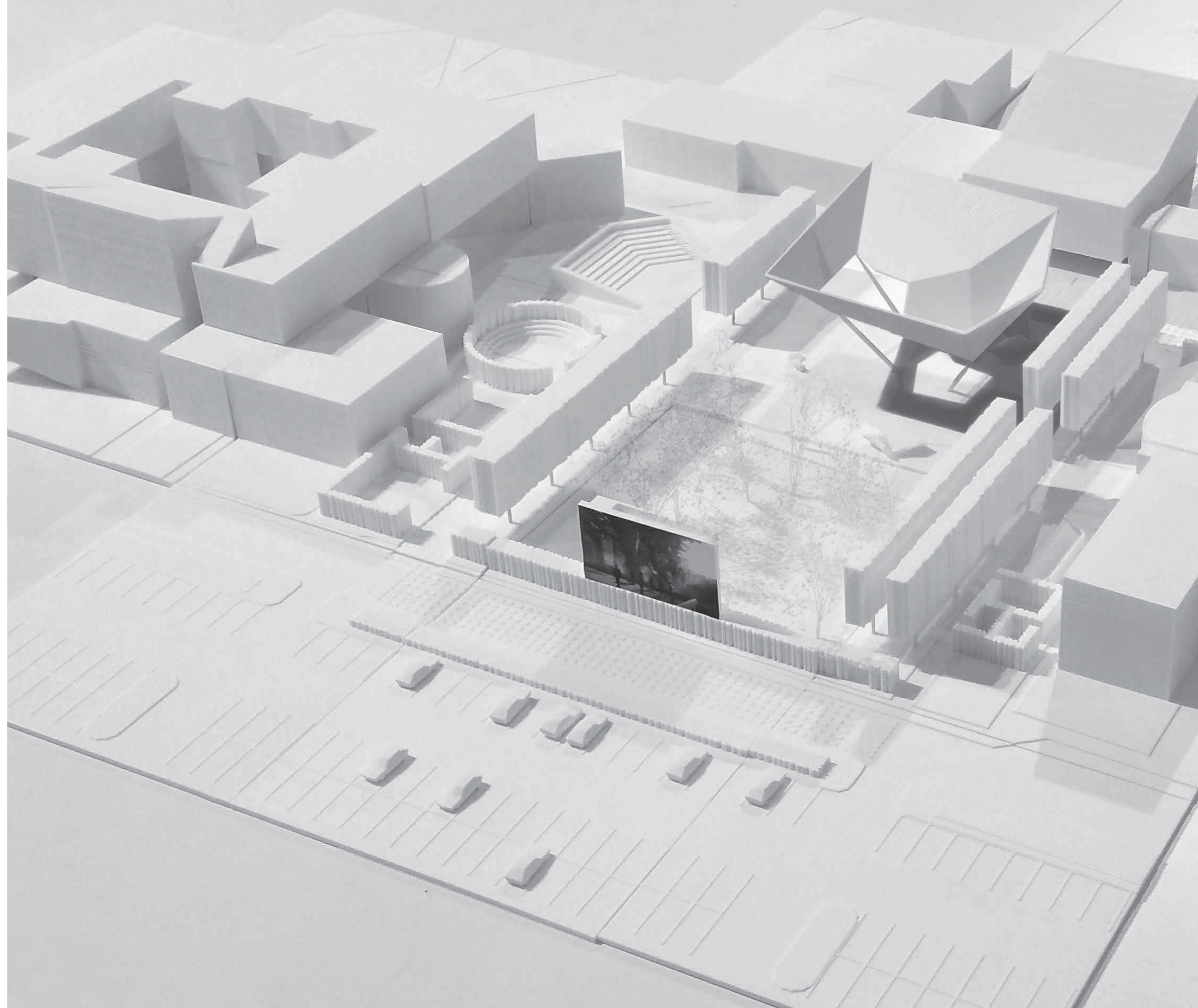




## DRIVE-IN

### SCREEN

The existing surface parking lot is activated through a series of berms that allow the cars an elevated vantage to view the screen. The screen provides a shielding wall to the existing Grove, creating a fourth wall to the quadrangle. The exterior screen activates a secondary room extending the Grove northward. The ability to occupy and ascend within the screen wall allows for a vertical experience of the old growth tree canopy and provide an overlooking promontory for a heroic view of downtown Houston.







## DIVERSITY GARDEN

### EXHIBITION

The analysis, models, diagrams and design thinking was the subject of a large exhibition that traced the development of the project.

